

# Quick Install Guide For bwa™ Kit - BP500/600

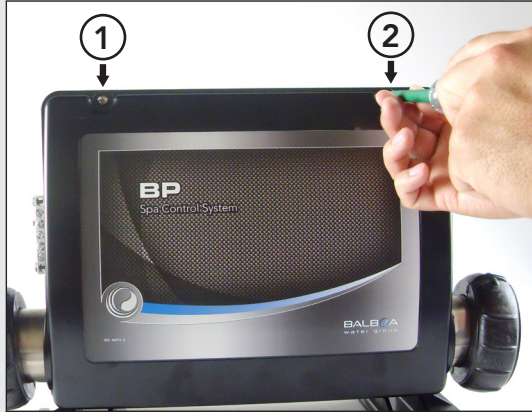
## TOOL YOU WILL NEED



### WARNING!

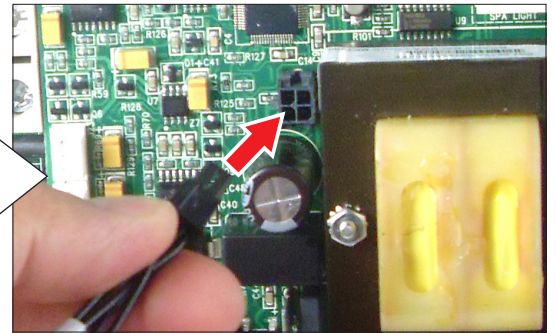
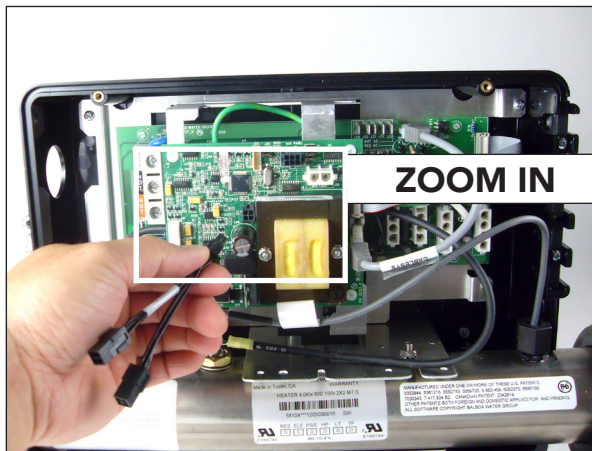
Please contact an electrician or your local electrical company to connect the Wi-Fi connector for you. **DO NOT OPEN THE SPA SYSTEM AND ATTEMPT TO CONNECT THE WI-FI CONNECTOR YOURSELF.** The high electrical voltage will harm or kill you.

## STEP 1



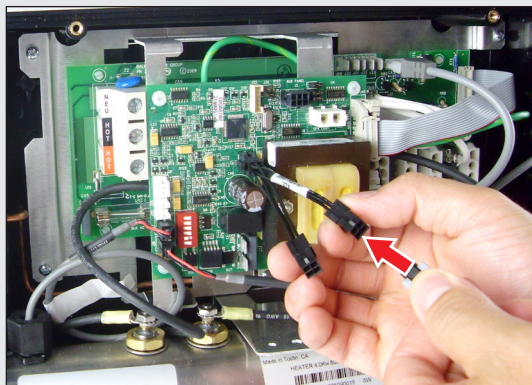
– Use a phillips screwdriver to remove the 2 top screws that hold the system cover in place.

## STEP 2



– Insert the Y-cable (25657) in Panel Jack C14.

## STEP 3

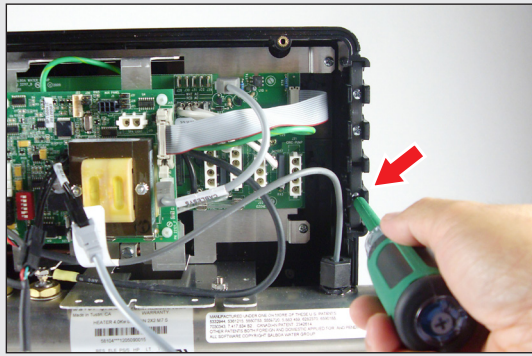


– Insert the Balboa Wi-Fi Cable into the first end of the Y-Cable (25657) Panel Jack.

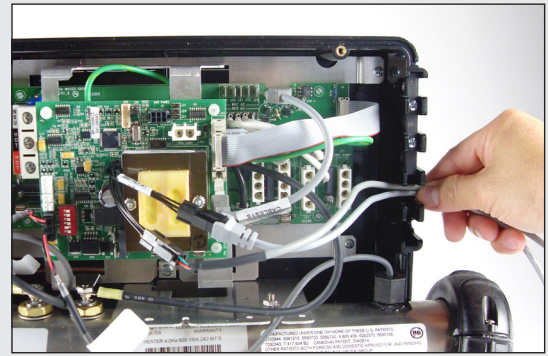


– Insert your Control Panel into the second end of the Y-Cable Panel Jack.

## STEP 4

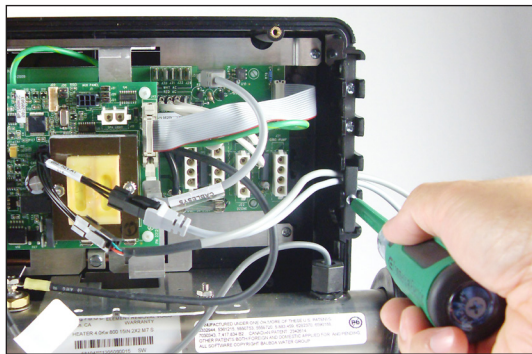


– Remove 1 screw to open the cable holder.

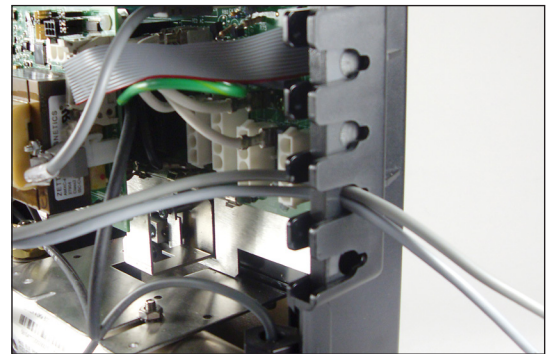


– Place the Wi-Fi cable and Control Panel cable inside the wire holder.

## STEP 5



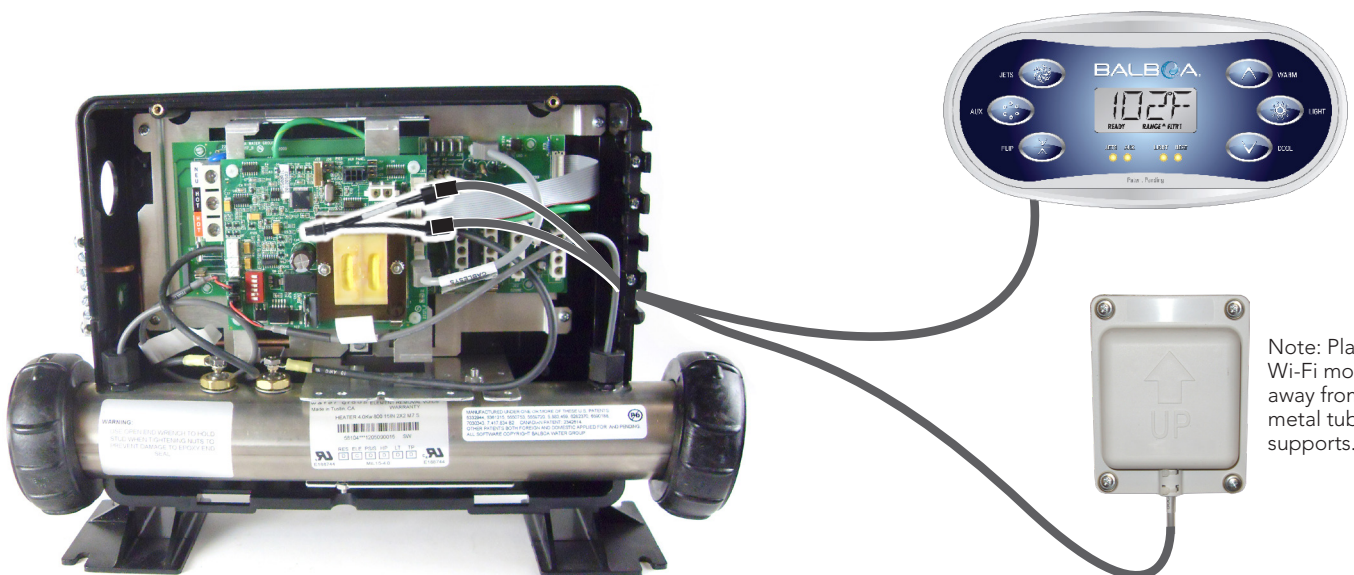
– Insert the plastic holder and screw back in place. Make sure the 2 cable wires are secure in place.



– Close up shot of how the 2 wires should look.

– Close the Control Panel System cover and secure the 2 top screws. **YOU'RE DONE!**

This is how your system should look like when finished.



Note: Place the Wi-Fi module away from any metal tub supports.